

Absorbant Glass Mat (AGM) technology for superior performance. Valve regulated, spill proof construction allows safe operation in any position. Approved for transport by air. D.O.T., I.A.T.A., F.A.A and C.A.B. certified. U.L. recognized under file number MH 20567

Maintenance-Free

Specification

Nominal Voltage	12 volts		
Nominal Capacity	77° F (25° C)		
20-hr. (5.00A)	100 Ah		
10-hr. (9.30A)	93.0 Ah		
5-hr. (17.0A)	85.0 Ah		
1-hr. (60.0A)	60.0 Ah		
Approximate Weight	57.0 lbs (25.9 kgs)		
Internal Resistance (approx.)	5mΩ		
Shelf Life (% of normal capacity at 68° F (20° C)			
3 Months	6 Months	12 Months	
91%	83%	64%	
Temperature Dependency of Capacity (20 hour rate)			
104° F (40°C)	77° F (25°C)	32° F (0°C)	5° F (-15°C)
102%	100%	85%	65%
AGM Operational Temperature			
Charge	32°F to 104°F (0°C to 40°C)		
Discharge	5°F to 113°F (-15°C to 45°C)		
AGM Storage Temperature	5°F to 104°F (-15°C to 40°C)		



Due to continuous improvements to our products, product may vary slightly from depiction.

Charge Method (Constant Voltage)

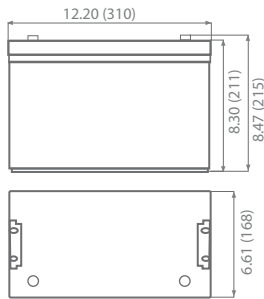
Cycle Use (Repeating Use)

Initial Current	30 A or smaller
Control Voltage	14.6 - 14.8 V

Float Use

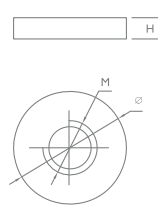
Control Voltage	13.6 - 13.8 V
-----------------	---------------

Physical Dimensions: in (mm)



L: 12.2in (310mm)
W: 6.61in (168 mm)
H: 8.30in (211mm)
TH: 8.47in (215mm)
Tolerances are +/- 0.04 in. (+/- 1mm) and +/- 0.08 in. (+/- 2mm) for height dimensions. All data subject to change without notice.

Terminals



I Series (Internal Thread)

Type	M	∅	H
I6	6.00 mm 0.24 in	16.0 mm 0.63 in	4.00 mm 0.16 in

Constant Current Discharge Characteristics Unit:A (25°C, 77°F)

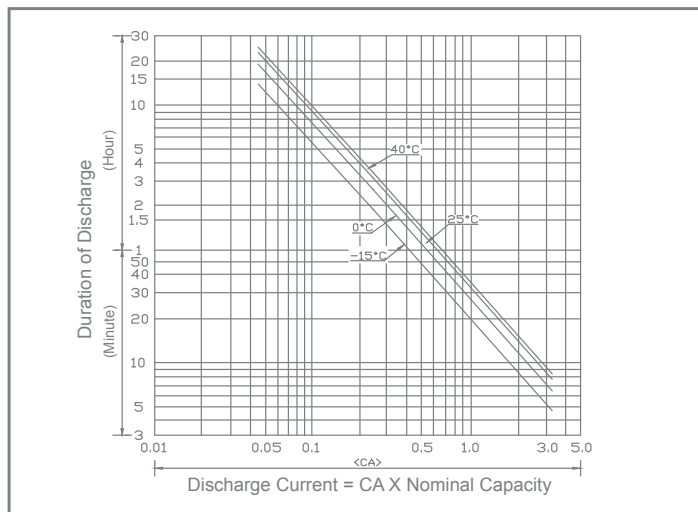
F.V/Time	5MIN	10MIN	15MIN	30MIN	1HR	2HR	3HR	4HR	5HR	8HR	10HR	20HR
9.60V	340.8	248.7	175.0	106.6	55.3	32.9	23.7	18.4	15.3	10.7	9.7	5.3
10.2V	300.0	226.3	156.6	100.4	52.0	30.8	23.0	18.0	14.9	10.5	9.5	5.1
10.5V	289.5	215.8	148.7	97.4	50.0	30.0	22.5	17.6	14.7	10.4	9.2	5
10.8V	277.6	204.0	138.2	94.7	48.7	29.3	22.0	17.4	14.3	10.1	9.2	5
11.1V	267.1	193.4	129.0	92.1	47.4	28.6	21.2	16.8	14.0	9.9	8.8	4.7

Constant Power Discharge Characteristics Unit:W (25°C, 77°F)

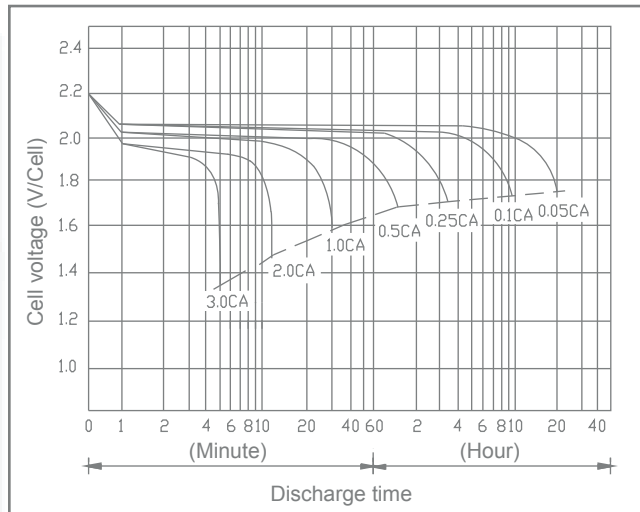
F.V/Time	5MIN	10MIN	15MIN	30MIN	1HR	2HR	3HR	4HR	5HR	8HR	10HR	20HR
9.60V	3725	2718	1912	1158	658	385	282	219	182	127	115	62
10.2V	3475	2588	1789	1147	619	367	275	214	177	125	112	61
10.5V	3377	2515	1720	1199	600	358	268	211	176	125	111	60
10.8V	3333	2450	1655	1136	582	351	263	206	172	122	110	60
11.1V	3272	2369	1579	1128	576	349	260	206	172	121	107	58

UB121000

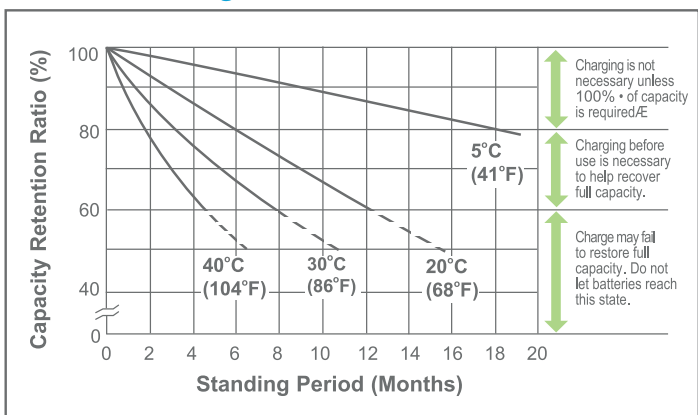
Discharge Time vs. Discharge Current



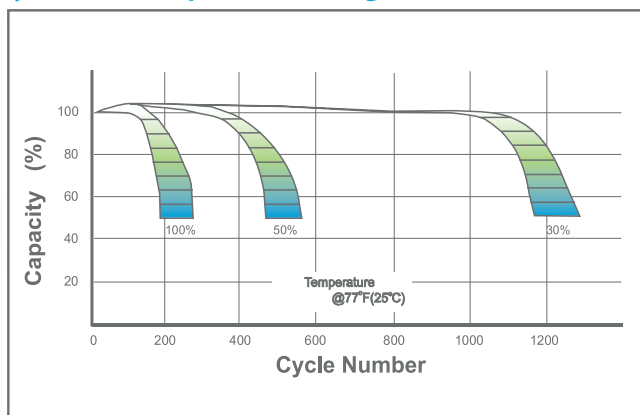
Discharge Characteristics



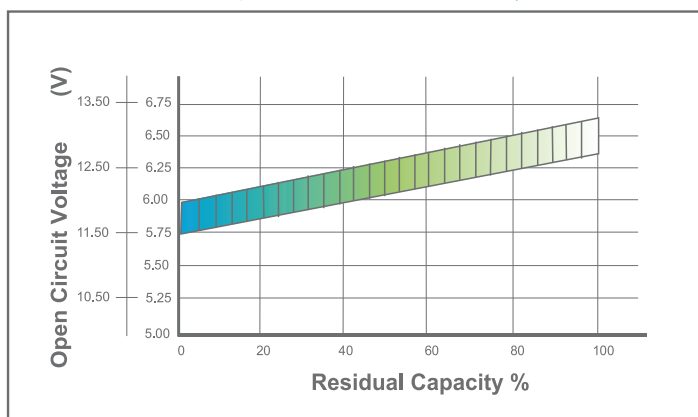
Shelf Life & Storage



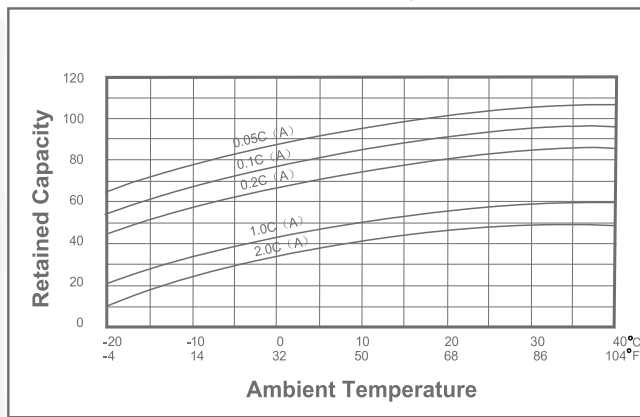
Cycle Life vs Depth of Discharge



Open Circuit Voltage vs Residual Capacity



Effect of Temperature on Capacity



Charge Current & Final Discharge Voltage

Application	Charge Voltage(V/Cell)			Max.Charge Current
	Temperature	Set Point	Allowable Range	
Cycle Use	25°C(77°F)	2.45	2.43~2.47	0.30C
Standby	25°C(77°F)	2.28	2.27~2.30	

Final Discharge Voltage V/Cell	1.75	1.70	1.60	1.30
Discharge Current(A)	0.2C>(A)	0.2C<(A)<0.5C	0.5C<(A)<1.0C	(A)>1.0C