

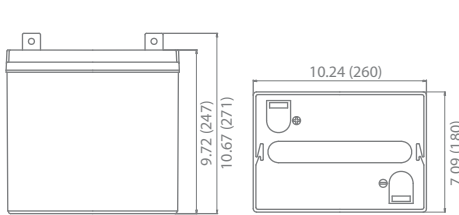
Specification

Nominal Voltage	6 volts		
Nominal Capacity	77° F (25° C)		
20-hr. (10.0 A)	200 Ah		
10-hr. (18.6 A)	186 Ah		
5-hr. (34.0 A)	170 Ah		
1-hr. (120 A)	120 Ah		
Approximate Weight	62.4 lbs (28.3 kgs)		
Internal Resistance (approx.)	4 mΩ		
Shelf Life (% of normal capacity at 68° F (20° C))			
3 Months	6 Months	12 Months	
91%	83%	64%	
Temperature Dependency of Capacity	(20 hour rate)		
104° F	77° F	32° F	5° F
102%	100%	85%	65%
AGM Operational Temperature			
Charge	32° F to 104° F (0° C to 40° C)		
Discharge	5° F to 113° F (-15° C to 45° C)		
AGM Storage Temperature	5° F to 104° F (-15° C to 40° C)		



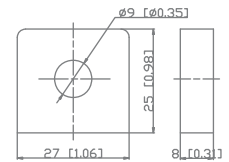
Charge Method (Constant Voltage)		
Cycle Use (Repeating Use)		
Initial Current	60 A or smaller	
Control Voltage	7.20 - 7.5 V	
Float Use		
Control Voltage	6.8 - 6.9 V	

Physical Dimensions: in (mm)

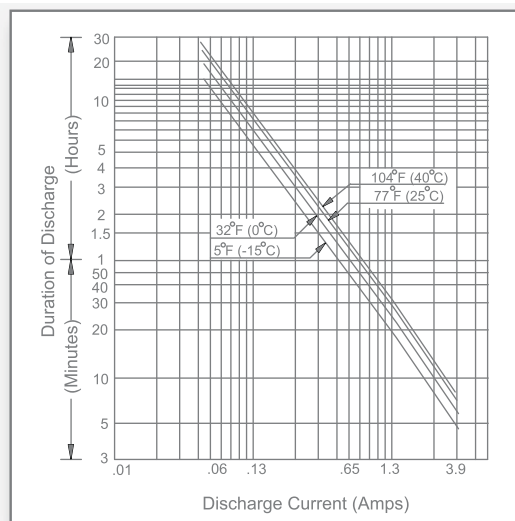


L: 10.24in (260 mm)
W: 7.09in (180 mm)
H: 9.72in (247 mm)
TH: 10.67in (271 mm)
 Tolerances are +/- 0.04 in. (+/- 1mm) and +/- 0.08 in. (+/- 2mm) for height dimensions. All data subject to change without notice.

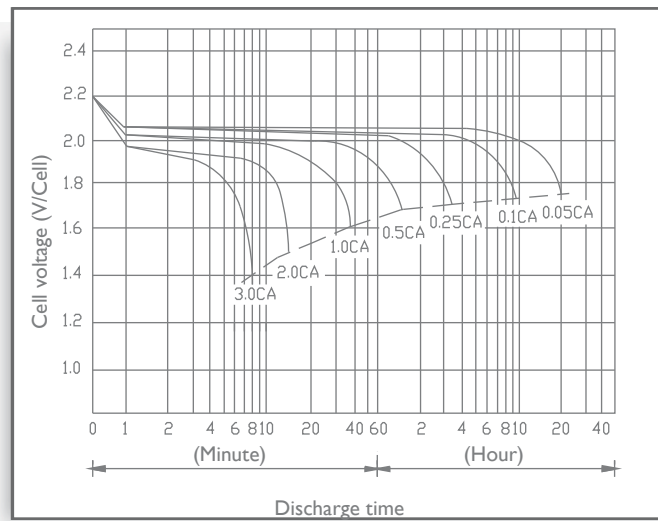
Terminals



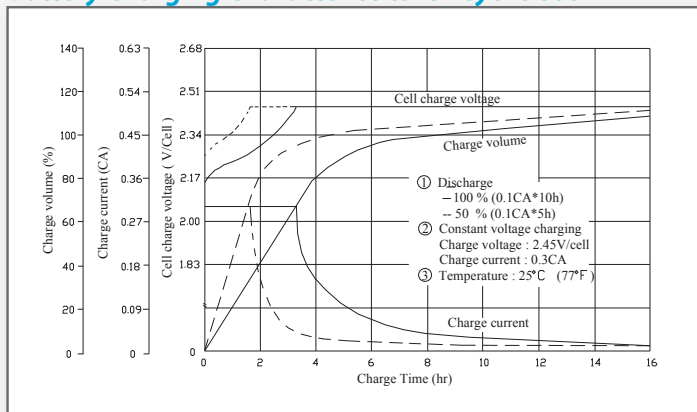
Discharge Time vs. Discharge Current



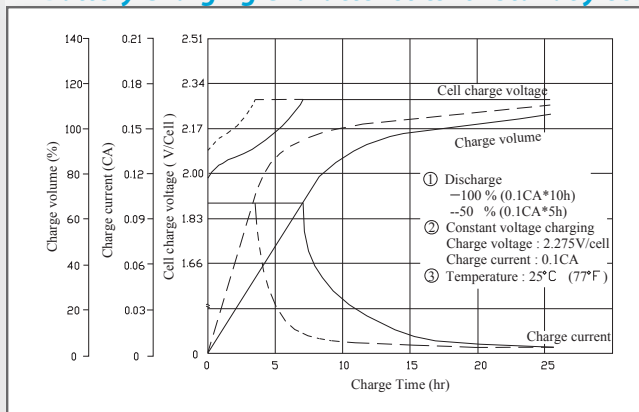
Discharge Characteristics



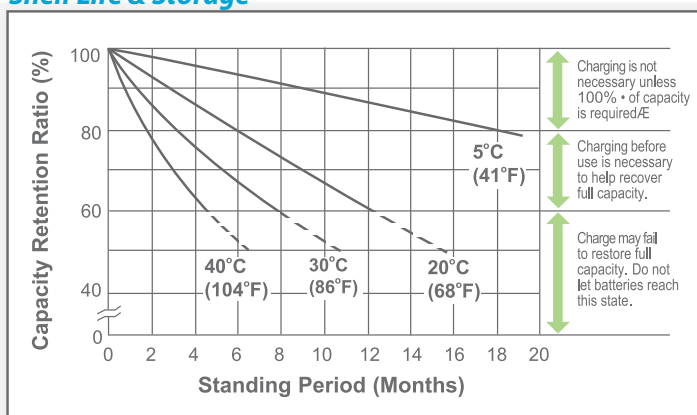
Battery Charging Characteristics for Cyclic Use



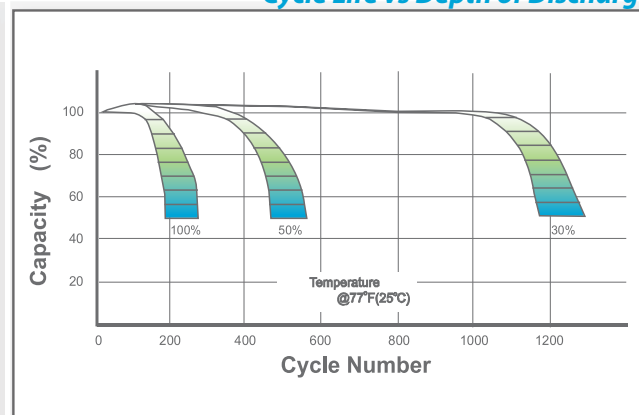
Battery Charging Characteristics for Standby Use



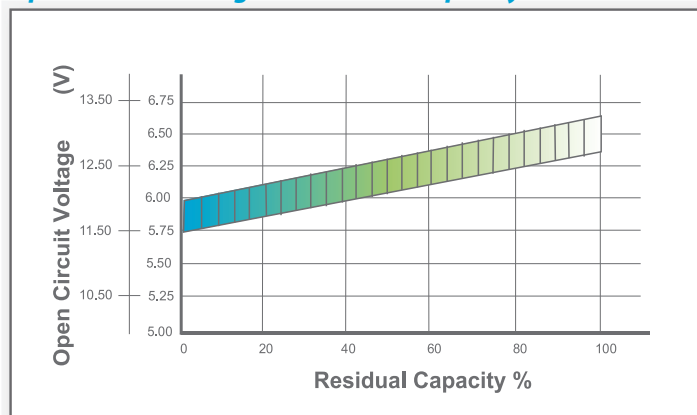
Shelf Life & Storage



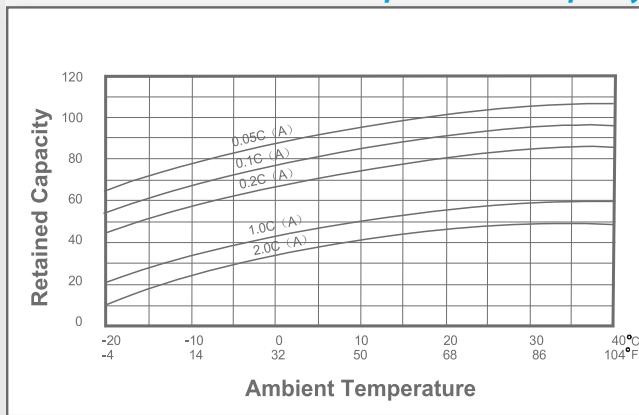
Cycle Life vs Depth of Discharge



Open Circuit Voltage vs Residual Capacity



Effect of Temperature on Capacity



Charge Current & Final Discharge Voltage

Application	Charge Voltage(V/Cell)			Max.Charge Current	Final Discharge Voltage V/Cell	Discharge Current(A)
	Temperature	Set Point	Allowable Range			
Cycle Use	25°C(77°F)	2.45	2.40~2.50	0.35C	1.75	0.2C>(A)
Standby	25°C(77°F)	2.325	2.30~2.35		1.70	0.2C<(A)<0.5C
					1.60	0.5C<(A)<1.0C
					1.30	(A)>1.0C