

UPG Sealed Lead-Acid Battery

UPG No. 45798

STAY POWERED®

Absorbant Glass Mat (AGM) technology for superior performance. Valve regulated, spill proof construction allows safe operation in any position. Approved for transport by air. D.O.T., I.A.T.A., F.A.A. and C.A.B. certified. U.L. recognized under file number MH 20567.

UB23000

Maintenance-Free



Due to continuous improvements to our products, product may vary slightly from depiction.

Specification

Nominal Voltage	2 Volts		
Nominal Capacity	77°F (25°C)		
20-hr. (15.0 A)	300 Ah		
10-hr. (27.9 A)	279 Ah		
5-hr. (51.0 A)	255 Ah		
1-hr. (180 A)	180 Ah		
Approximate Weight	39.68 lbs (18.0 kgs)		
Internal Resistance (approx.)	0.72 mΩ		
Shelf Life (% of normal capacity at 68° F (20° C))			
3 Months	6 Months	12 Months	
91%	83%	64%	
Temperature Dependency of Capacity	(20 hour rate)		
104° F (40°C)	77° F (25°C)	32° F (0°C)	5° F (-15°C)
102%	100%	85%	65%
AGM Operational Temperature			
Charge	32°F to 104°F (0°C to 40°C)		
Discharge	5°F to 113°F (-15°C to 45°C)		
AGM Storage Temperature	5°F to 104°F (-15°C to 40°C)		

Charge Method (Constant Voltage)

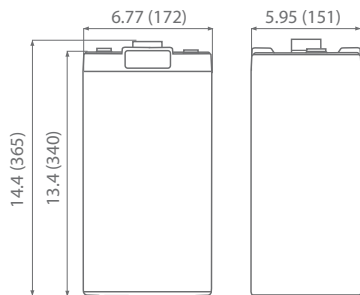
Cycle Use (Repeating Use)

Initial Current	60 A
Control Voltage	2.45 V

Float Use

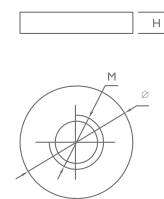
Control Voltage	2.28 V
-----------------	--------

Physical Dimensions: in (mm)



L: 6.77 in (172 mm)
W: 5.95 in (151 mm)
H: 13.4 in (340 mm)
TH: 14.4 in (365 mm)
 Tolerances are +/- 0.04 in. (+/- 1mm) and +/- 0.08 in. (+/- 2mm) for height dimensions. All data subject to change without notice.

Terminals



Dimension	M	Ø	H	
Type	18	10.0 mm 0.39 in	19.0 mm 0.75 in	2.00 mm 0.08 in

Constant Current Discharge Characteristics Unit:A (25°C, 77°F)

F.V/Time	15MIN	30MIN	60MIN	2HR	3HR	5HR	8HR	10HR	20HR	24HR
1.60	407	317	197	119	87.7	56.3	41.1	30.5	16.0	13.9
1.65	378	294	183	118	87.3	56.1	40.9	30.4	16.0	13.9
1.70	390	304	189	118	86.8	55.8	40.7	30.2	15.8	13.8
1.75	378	294	183	117	86.4	55.5	40.5	30.1	15.8	13.7
1.80	371	289	179	115	84.7	54.4	39.7	30.0	15.8	13.7

Constant Power Discharge Characteristics Unit:W (25°C, 77°F)

F.V/Time	15MIN	30MIN	60MIN	2HR	3HR	5HR	8HR	10HR	20HR	24HR
1.60	732	586	376	219	173	112	82.0	60.9	32.0	27.8
1.65	680	545	350	217	172	112	81.6	60.8	31.9	27.7
1.70	702	562	361	216	171	111	81.2	60.4	31.7	27.5
1.75	680	545	350	215	171	110	80.8	60.2	31.6	27.4
1.80	667	534	343	211	167	108	79.2	60.0	31.5	27.4

www.upgi.com

All specifications subject to change without notice.

UPG
STAY POWERED®

UPG is ISO Certified

120 Dividend Dr. Ste 100
Coppell, TX 75019

Main 469.892.1122
Toll Free 866.892.1122

Fax 469.892.1123
sales@upgi.com

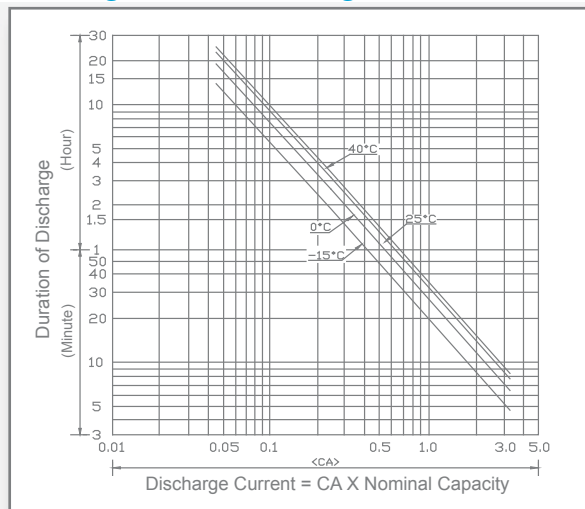
Copyright © 2023 Universal Power Group Inc. All rights reserved.

D1904-1

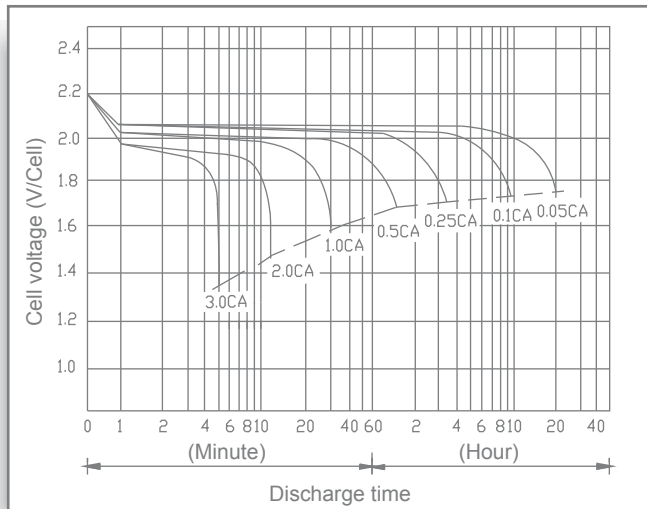
UB23000

Maintenance-Free

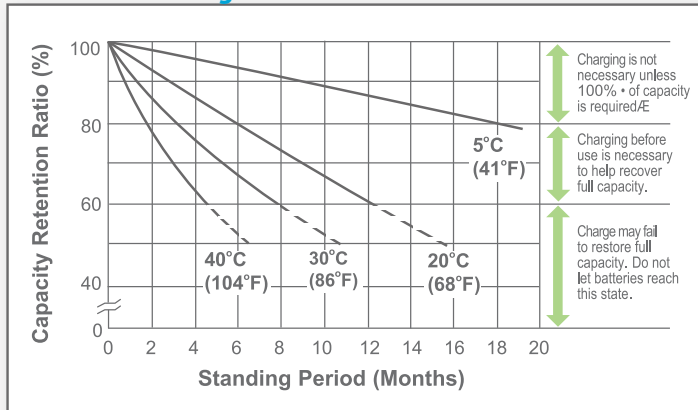
Discharge Time vs. Discharge Current



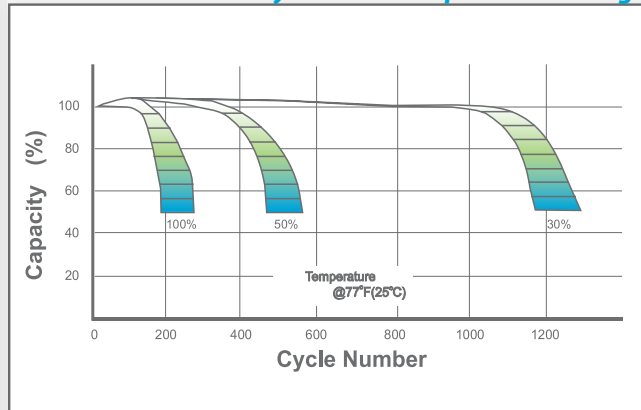
Discharge Characteristics



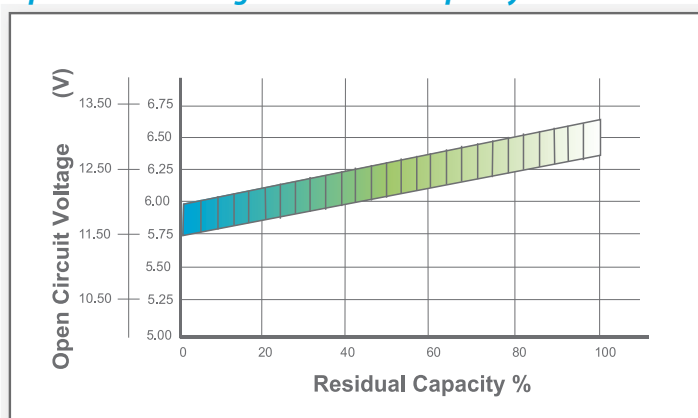
Shelf Life & Storage



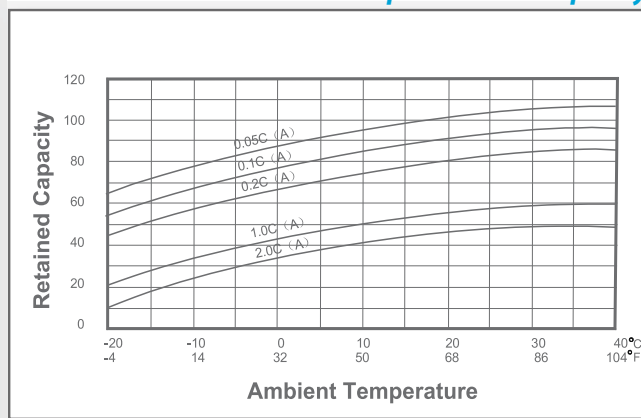
Cycle Life vs Depth of Discharge



Open Circuit Voltage vs Residual Capacity



Effect of Temperature on Capacity



Charge Current & Final Discharge Voltage

Application	Charge Voltage(V/Cell)			Max.Charge Current	Final Discharge Voltage V/Cell	Discharge Current(A)		
	Temperature	Set Point	Allowable Range					
Cycle Use	25°C(77°F)	2.45	2.40~2.47	0.30C	1.75	1.70		
Standby	25°C(77°F)	2.30	2.27~2.30		1.60	1.30		
					0.2C>(A)	0.2C<(A)<0.5C	0.5C<(A)<1.0C	(A)>1.0C