

UPG Sealed Lead-Acid Battery

STAY POWERED®

Absorbant Glass Mat (AGM) technology for superior performance. Valve regulated, spill proof construction allows safe operation in any position. Approved for transport by air, D.O.T., I.A.T.A., F.A.A. and C.A.B. certified. U.L. recognized under file number MH 20567.

UPG No. 40503

Group 34

Maintenance-Free

Specification

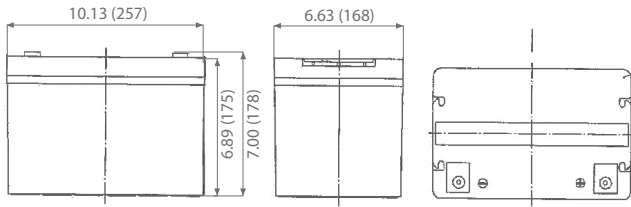
Nominal Voltage	12 volts		
Nominal Capacity	77° F (25° C)		
20-hr. (3.00 A)	60.0 Ah		
10-hr. (5.58 A)	55.8 Ah		
5-hr. (10.2 A)	51.0 Ah		
1-hr. (36.0 A)	36.0 Ah		
Approximate Weight	38.1 lbs (17.3 kgs)		
Internal Resistance (approx.)	6 mΩ		
Shelf Life (% of normal capacity at 68° F (20° C))			
3 Months	6 Months	12 Months	
91%	83%	64%	
Temperature Dependency of Capacity (20 hour rate)			
104° F	77° F	32° F	5° F
102%	100%	85%	65%
AGM Operational Temperature			
Charge	32° F to 104° F (0° C to 40° C)		
Discharge	5° F to 113° F (-15° C to 45° C)		
AGM Storage Temperature	5° F to 104° F (-15° C to 40° C)		



Due to continuous improvements to our products, product may vary slightly from depiction.

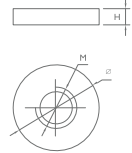
Charge Method (Constant Voltage)	
Cycle Use (Repeating Use)	
Initial Current	18.0 A or smaller
Control Voltage	14.6 - 14.8 V
Float Use	
Control Voltage	13.6 - 13.8 V

Physical Dimensions: in (mm)



L: 10.13 in (257 mm)
W: 6.63 in (168 mm)
H: 6.89 in (175 mm)
TH: 7.00 in (178 mm)
 Tolerances are +/- 0.04 in. (+/- 1mm) and +/- 0.08 in. (+/- 2mm) for height dimensions. All data subject to change without notice.

Terminals



Type	Dimension	M	Ø	H
I6		6.00 mm 0.24 in	16.0 mm 0.63 in	6.00 mm 0.24 in

Constant Current Discharge Characteristics Unit:A (25°C, 77°F)

F.V/Time	5MIN	10MIN	15MIN	30MIN	1HR	2HR	3HR	5HR	8HR	10HR	20HR
9.60V	169.9	140.2	110.12	66.98	37.05	22.27	16.78	10.76	6.94	5.786	3.037
9.90V	164.8	136.0	107.92	65.64	36.31	22.16	16.70	10.71	6.91	5.757	3.022
10.2V	161.4	133.2	105.72	64.30	35.57	21.95	16.53	10.60	6.88	5.734	3.010
10.5V	152.0	129.0	102.42	62.29	34.46	21.73	16.36	10.50	6.86	5.717	3.001
10.8V	139.3	125.2	100.43	61.08	33.79	21.51	16.20	10.39	6.84	5.700	2.993

Constant Power Discharge Characteristics Unit:W (25°C, 77°F)

F.V/Time	5MIN	10MIN	15MIN	30MIN	1HR	2HR	3HR	5HR	8HR	10HR	20HR
9.60V	1834	1531	1222	751	422.4	257.9	197.3	127.2	83.3	69.1	36.45
9.90V	1779	1485	1185	736	413.9	256.7	196.3	126.6	82.9	68.7	36.27
10.2V	1743	1455	1161	721	405.5	254.1	194.4	125.3	82.6	68.5	36.13
10.5V	1642	1409	1125	699	392.8	251.6	192.4	124.1	82.3	68.3	36.02
10.8V	1504	1367	1103	685	385.2	249.0	190.5	122.8	82.1	68.1	35.91

www.upgi.com

All specifications subject to change without notice.



UPG is ISO Certified

120 Dividend Dr. Ste 100
Coppell, TX 75019

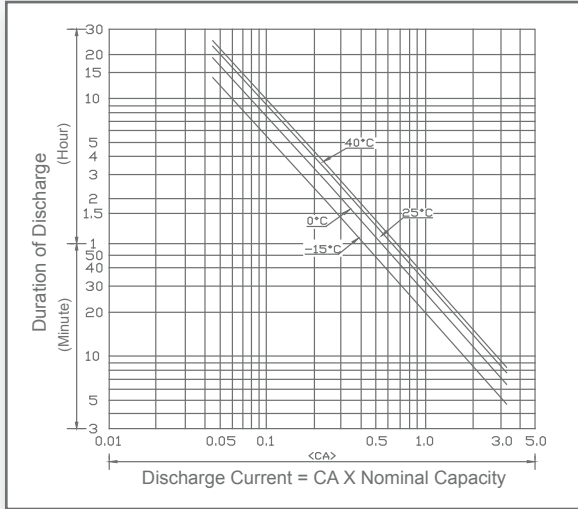
Main 469.892.1122
Toll Free 866.892.1122

Fax 469.892.1123
sales@upgi.com

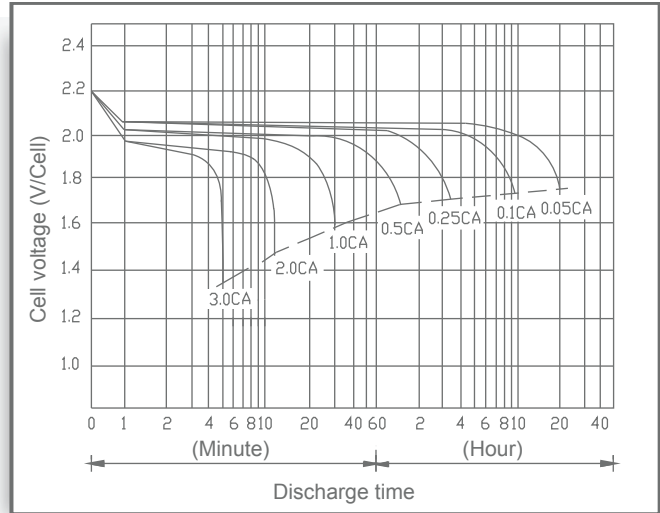
Copyright © 2024 Universal Power Group Inc. All rights reserved.

00324-1

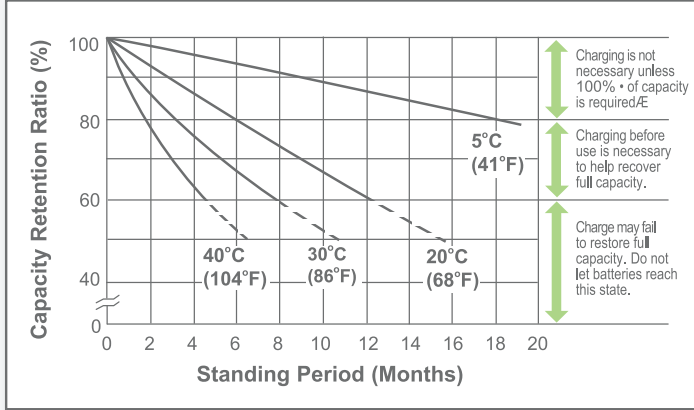
Discharge Time vs. Discharge Current



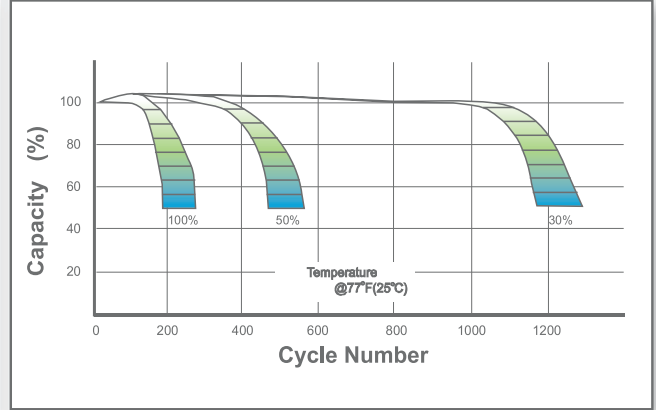
Discharge Characteristics



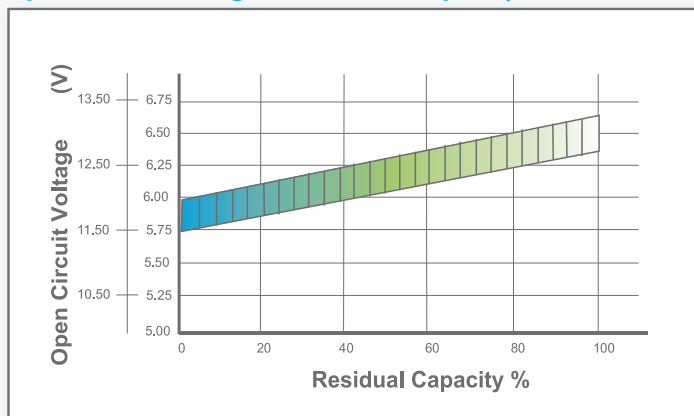
Shelf Life & Storage



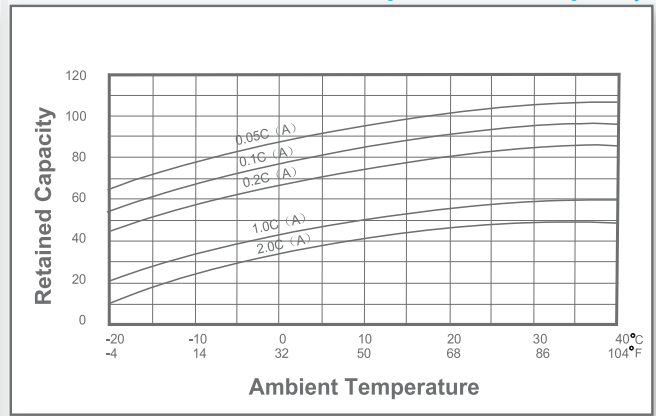
Cycle Life vs. Depth of Discharge



Open Circuit Voltage vs. Residual Capacity



Effect of Temperature on Capacity



Charge Current & Final Discharge Voltage

Application	Charge Voltage(V/Cell)			Max.Charge Current	Final Discharge Voltage V/Cell	Discharge Current(A)		
	Temperature	Set Point	Allowable Range					
Cycle Use	25°C(77°F)	2.45	2.43~2.47	0.30C	1.75	1.70		
Standby	25°C(77°F)	2.28	2.27~2.30		1.60	1.30		
					0.2C>(A)	0.2C<(A)<0.5C	0.5C<(A)<1.0C	(A)>1.0C