

Gelled Silica technology for superior performance. Valve regulated, spill proof construction allows safe operation in any position. Approved for transport by air. D.O.T., I.A.T.A., F.A.A. and C.A.B. certified. U.L. recognized under file number MH 20567.

Maintenance-Free

Specification

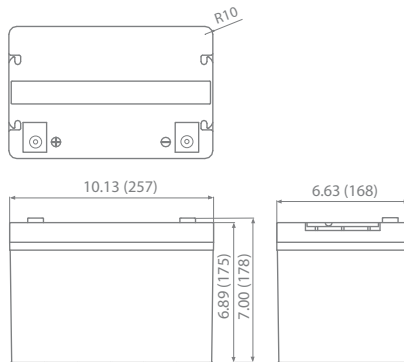
Nominal Voltage	12 volts		
Nominal Capacity	77° F (25° C)		
20-hr. (3.00A)	60.0 Ah		
10-hr. (5.58A)	55.8 Ah		
5-hr. (10.2A)	51.0 Ah		
1-hr. (36.0A)	36.0 Ah		
Approximate Weight	39.0 lbs (17.7 kgs)		
Internal Resistance (approx.)	6mΩ		
Shelf Life (% of normal capacity at 68° F (20° C))			
3 Months	6 Months	12 Months	
91%	83%	64%	
Temperature Dependency of Capacity (20 hour rate)			
104° F (40° C)	77° F (25° C)	32° F (0° C)	5° F (-15° C)
102%	100%	85%	65%
GEL Operational Temperature			
Charge	32°F to 104°F (0°C to 45°C)		
Discharge	5°F to 113°F (-15°C to 50°C)		
GEL Storage Temperature	5°F to 104°F (-15°C to 45°C)		



Due to continuous improvements to our products, product may vary slightly from depiction.

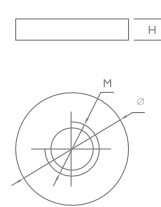
Charge Method (Constant Voltage)		
Cycle Use (Repeating Use)		
Initial Current	12.0 A or smaller	
Control Voltage	14.2 - 14.4 V	
Float Use		
Control Voltage	13.2 - 13.4 V	

Physical Dimensions: in (mm)



L: 10.13 in (257 mm)
W: 6.63 in (168 mm)
H: 6.89 in (175 mm)
TH: 7.00 in (178 mm)
 Tolerances are +/- 0.04 in. (+/- 1mm) and +/- 0.08 in. (+/- 2mm) for height dimensions. All data subject to change without notice.

Terminals



Dimension	M	Ø	H
Type I 6	6.00 mm 0.24 in	16.0 mm 0.63 in	4.00 mm 0.16 in

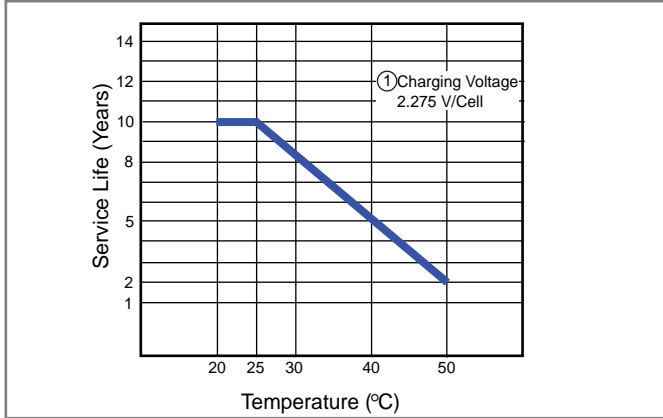
Constant Current Discharge Characteristics Unit:A (25°C, 77°F)

F.V/Time	5MIN	10MIN	15MIN	30MIN	1HR	2HR	3HR	5HR	8HR	10HR	20HR
9.60	155	119	93	62.4	37.8	23.1	16.1	11.0	7.31	6.09	3.20
9.90	150	115	91.1	61.2	37.0	23.0	16.1	10.9	7.27	6.06	3.18
10.2	147	113	89.3	59.9	36.3	22.8	15.9	10.8	7.24	6.04	3.17
10.5	142	109	86.5	58.0	35.2	22.6	15.7	10.7	7.22	6.02	3.16
10.8	121	106	84.8	56.9	34.5	22.3	15.6	10.6	7.20	6.00	3.15

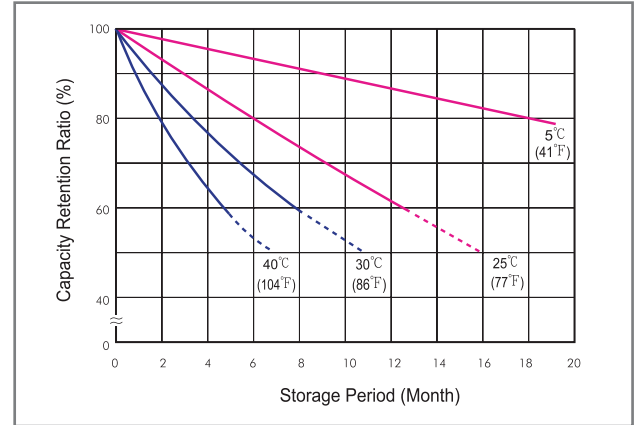
Constant Power Discharge Characteristics Unit:W (25°C, 77°F)

F.V/Time	5MIN	10MIN	15MIN	30MIN	1HR	2HR	3HR	5HR	8HR	10HR	20HR
9.60	1625	1283	1021	700	431	268	190	130	87.7	72.7	38.4
9.90	1577	1245	1001	686	422	267	189	129	87.3	72.4	38.2
10.2	1544	1219	980	672	414	264	187	128	86.9	72.1	38.0
10.5	1495	1180	950	651	401	261	185	126	86.6	71.8	37.9
10.8	1268	1146	931	639	393	259	183	125	86.4	71.6	37.8

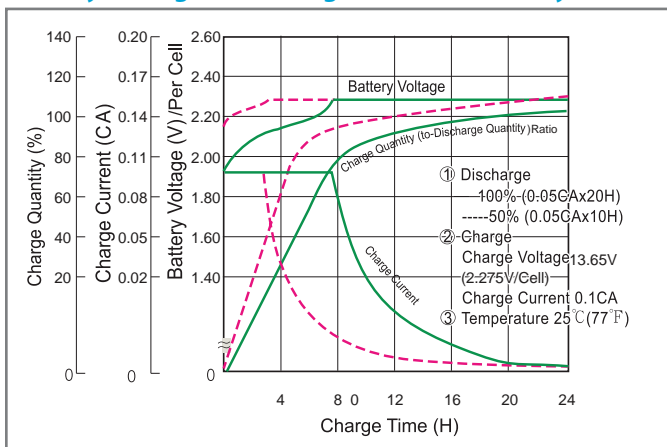
Trickle (or Float) Service Life



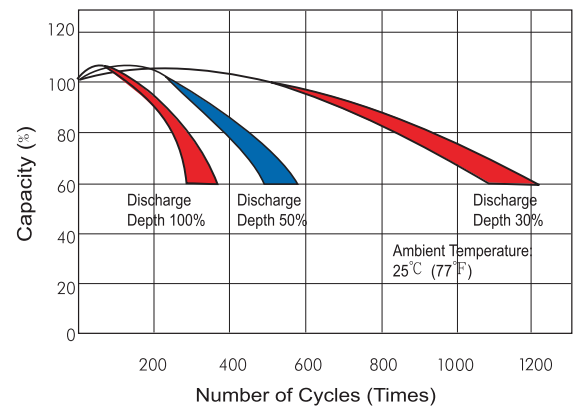
Capacity Retention Characteristic



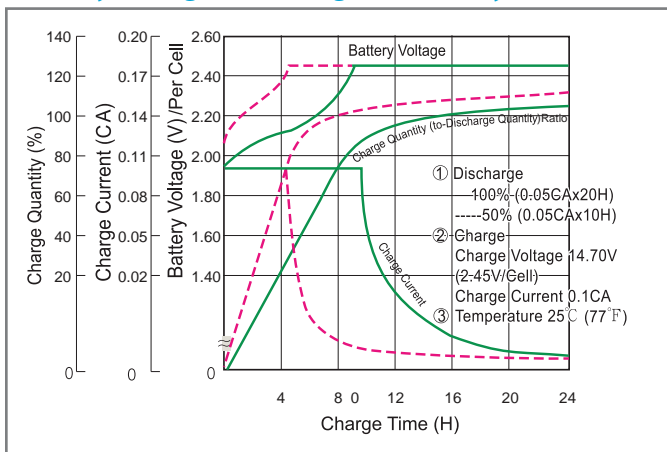
Battery Voltage and Charge Time for Standby Use



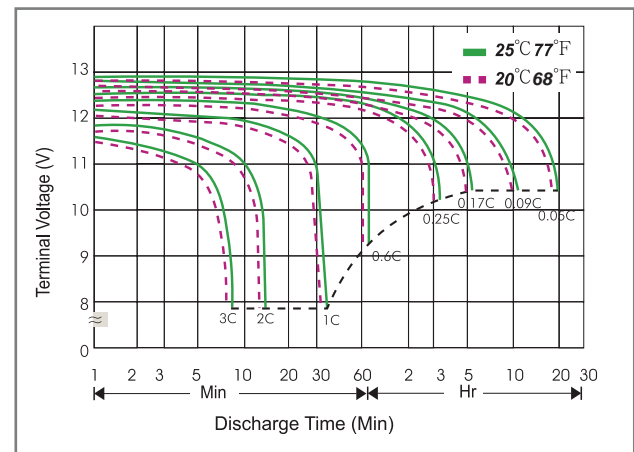
Cycle Service Life



Battery Voltage and Charge Time for Cycle Use



Terminal Voltage (V) and Discharge Time



Charge Current & Final Discharge Voltage

Application	Charge Voltage(V/Cell)			Max.Charge Current
	Temperature	Set Point	Allowable Range	
Cycle Use	25°C(77°F)	2.38	2.37~2.40	0.20C
Standby	25°C(77°F)	2.22	2.20~2.23	

Final Discharge Voltage V/Cell	1.75	1.70	1.65	1.60
Discharge Current(A)	0.2C>(A)	0.2C<(A)<0.5C	0.5C<(A)<1.0C	(A)>1.0C



Let UPG Power Your Life.

www.upgi.com